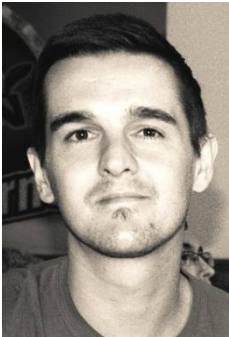


MICHAEL H. LEES**Nanyang Technological University**

Michael Lees is an Assistant Professor in the School of Computer Engineering, Nanyang Technological University (NTU). Dr Lees received his PhD from the School of Computer Science at the University of Nottingham, UK. He has post-doctoral experience at NTU, the University of Nottingham and the University of Birmingham, UK. His Bachelor's degree was obtained from the University of Edinburgh in the fields of Computer Science and Artificial Intelligence.

His current research interests are primarily in modelling and simulation of large-scale complex systems. In particular understanding the effect that human behavior has on such systems and the important role that individual behavioral interactions have on system level dynamics. Current application areas include the study of human crowds and egress, social contact networks (infectious diseases) and traffic and transportation systems. In order to simulate such systems it is often necessary to address problems of scalability, so his work also attempts to address this issue using various techniques from distributed simulation, multi-scale modelling and high performance computing.

Web: www.mhlees.com